



PORTFOLIO

---



2M PROJECT MANAGEMENT



# About

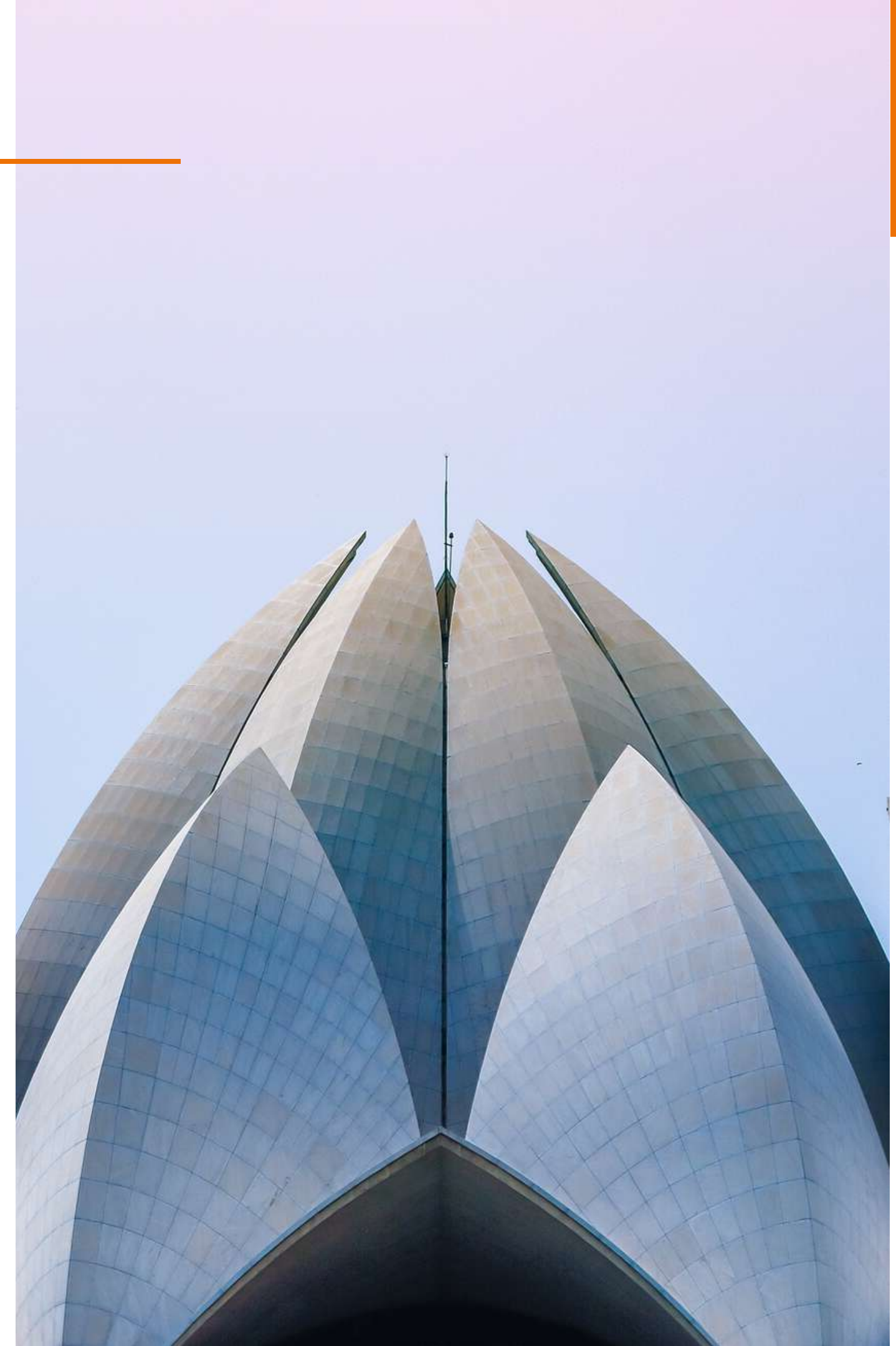
2M Project Management is a dynamically developing company whose business includes building consultancy, provision of investment supervision services, project management, technical consultancy and bank supervision related to industrial/commercial/residential buildings, road construction and specialised construction.

# Who we are

---

A group of highly skilled and experienced specialists, engineers and managers are the core of our business. They gained their expertise in implementing and supervising complex and advanced investment projects in Poland.

2M Project Management's staff hold relevant licences and certificates, guaranteeing high-quality supervision, project management and investment completion.





PROJECTS' VALUE

**19 billion PLN**

PROJECTS COMPLETED

**1400**

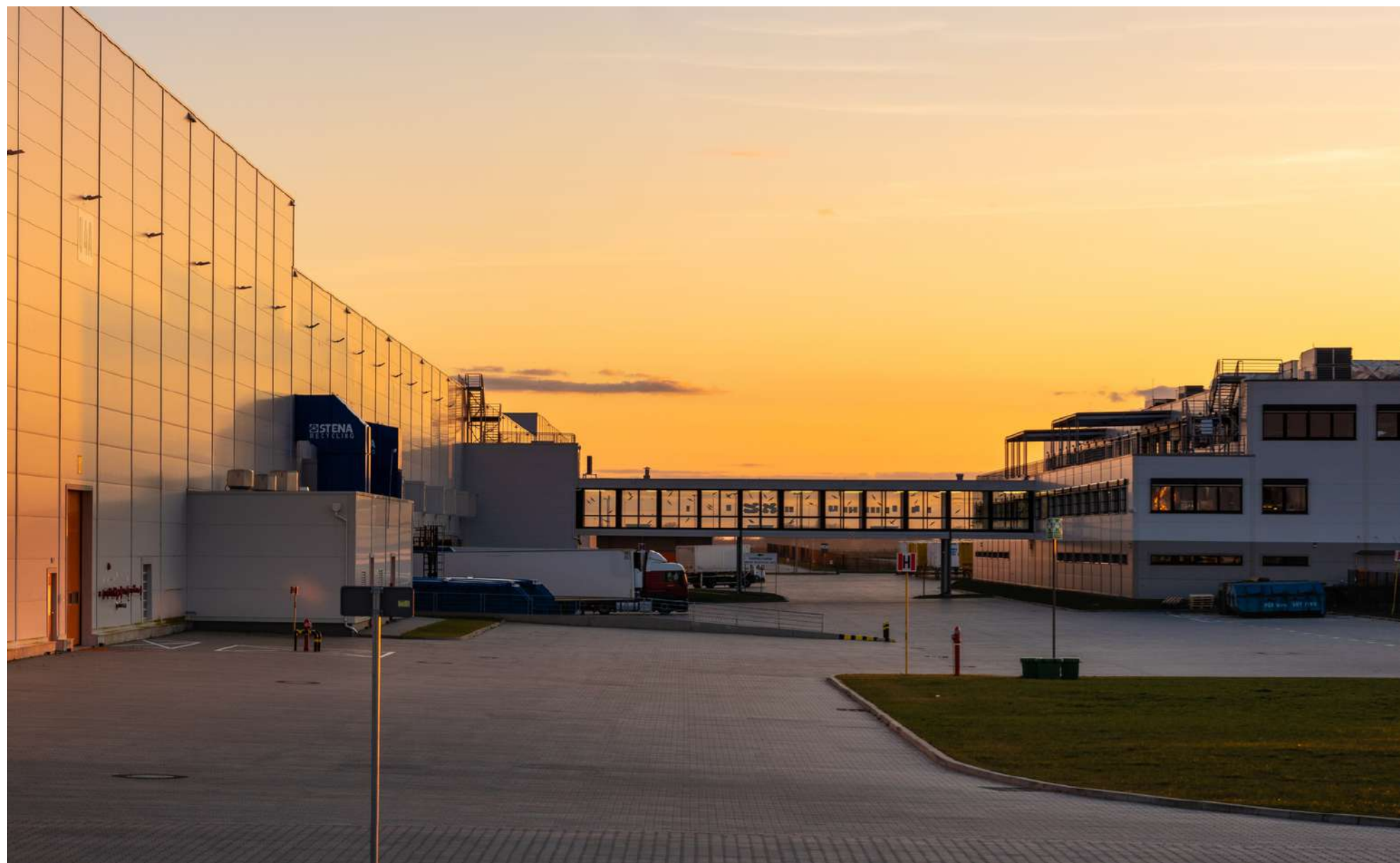
STAFF EXPERIENCE

**> 20 years**

TEAM OF ENGINEERS

**> 300 people**

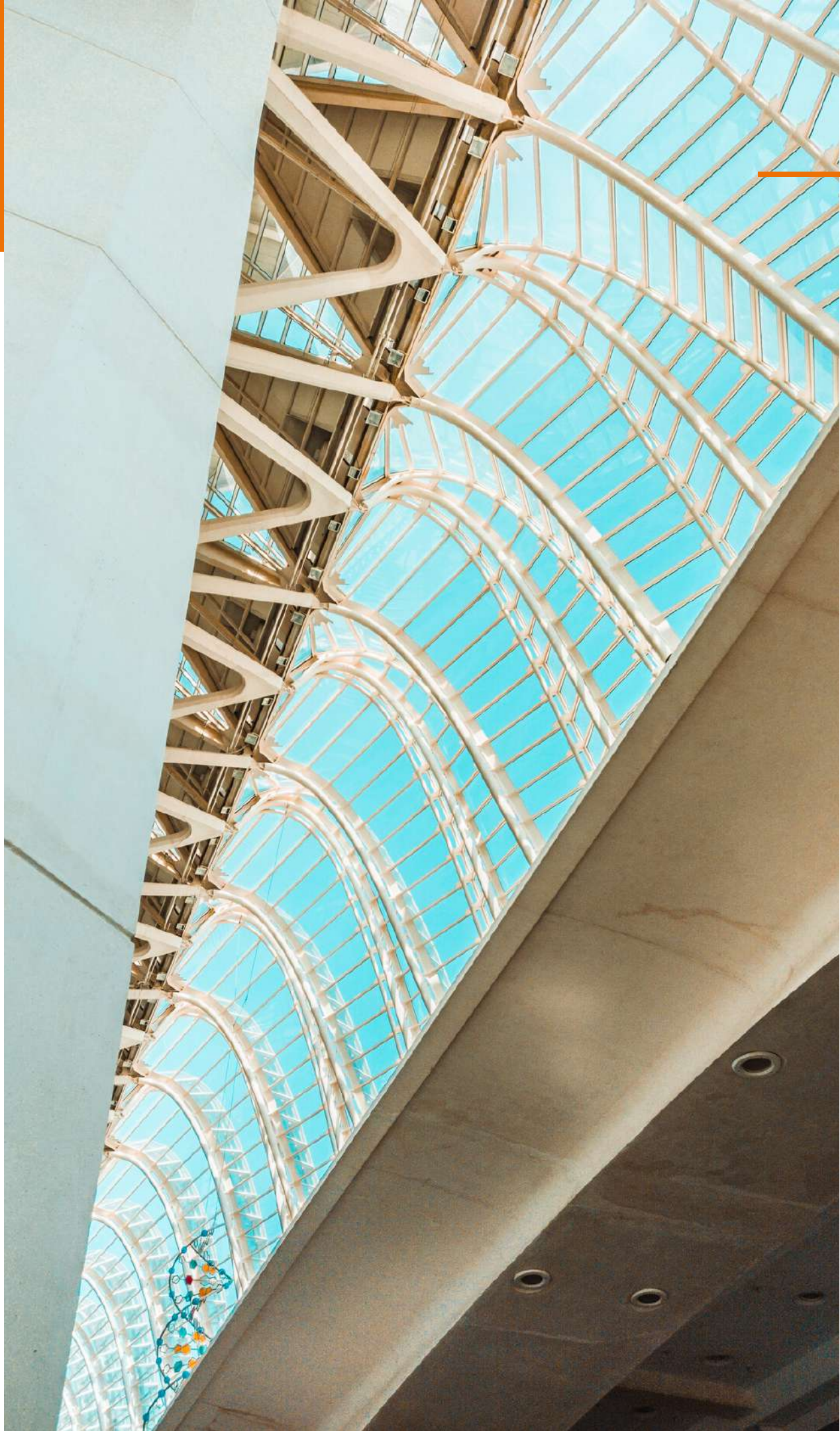
# Industrial facilities



Timely commissioning and adaptation to the tenant's standards are extremely important for the execution of logistic and investment projects. If the deadline for completing the works is short, a group of qualified and experienced supervision inspectors is indispensable to support the investor's interests.

While executing the projects related to the construction of new factories, as well as reconstruction and extension of existing sites, we participate in the early stage of the investment specifications preparation and carry out tenders to appoint the contractors.





## INDUSTRIAL FACILITIES

---



INVESTMENT PROJECT VALUE

> 10 billion PLN



USABLE AREA

> 7 million m<sup>2</sup>



PROJECTS COMPLETED

> 400

# ŽABKA 7R

One of the most technologically advanced warehouse projects in Europe, including a high bay storage (40 m high). The largest and most modern facility within the Žabka chain infrastructure.





## TRIXIE TEKSTYLIA

---

A production and warehouse facility with a 9,200 m<sup>2</sup> area and a modern office building with 1,300 m<sup>2</sup>; the facility shall hold a pet beds production plant.





# HILLWOOD HALE LOGISTYCZNE

We developed logistic facilities for Hillwood in many locations, including but not limited to Sycow, Góra Kalwaria, Rawa Mazowiecka and Łódź.





## GEA POLSKA

---

The project consisted in refurbishing an existing plant and developing production and warehouse facility with a 21,456 m<sup>2</sup> area.

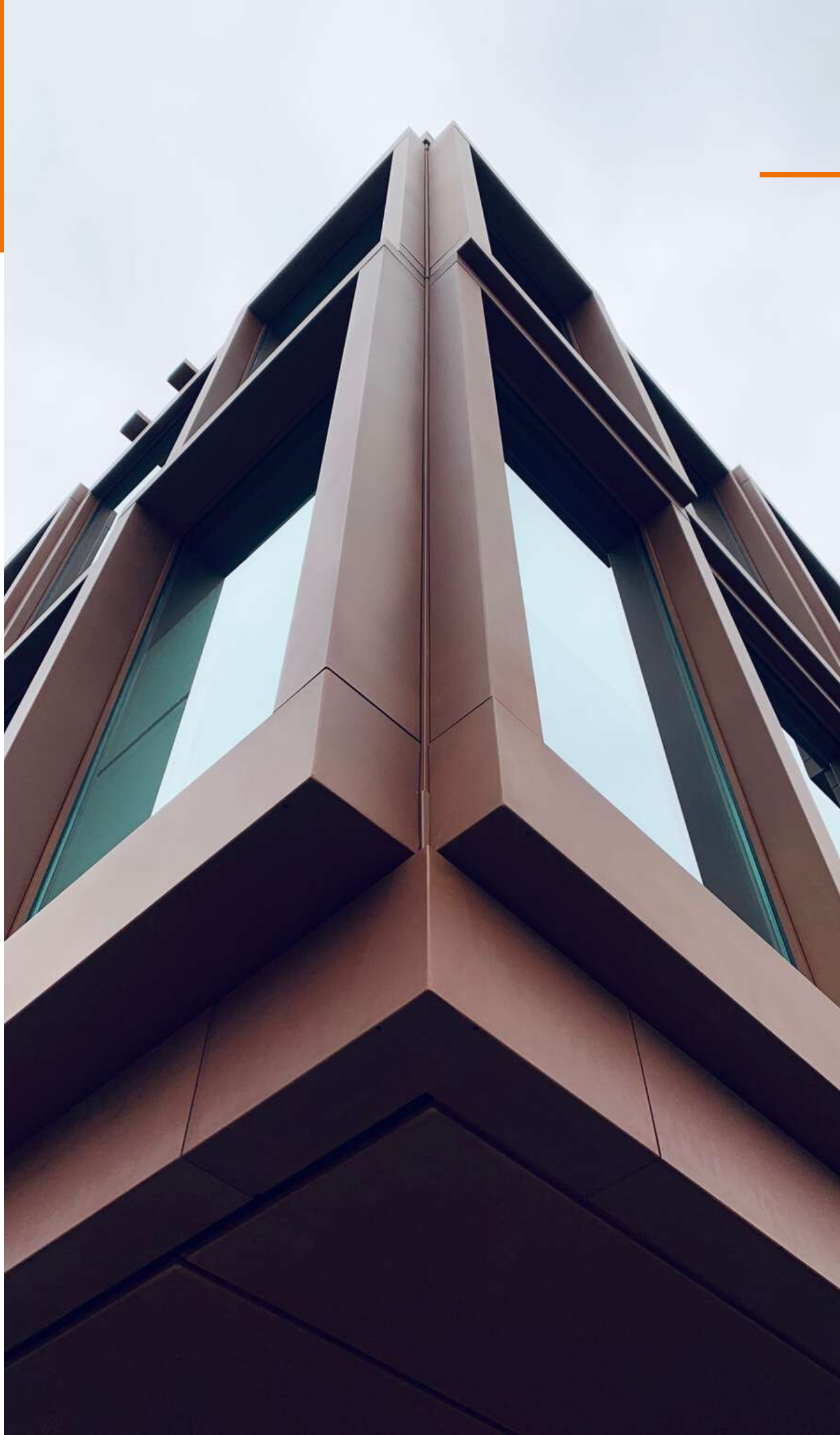




# Residential buildings

---

Cooperation with many renowned housing property developers, which ended with commissioning thousands of flats, helped us develop standards and operation methodology making Investors feel secure executing projects with us. Moreover, the collaboration with property developers in the early stage of investment preparation, including but not limited to the stage of designing and running tenders for building contractors, helped us recognise their needs better.



## RESIDENTIAL BUILDINGS

---



INVESTMENT PROJECT VALUE

> 5 billion PLN



USABLE AREA

> 1,5 million m<sup>2</sup>



HOUSING PREMISES

> 13 500

# FUZJA ECHO INVESTMENT

---

A housing investment with commercial, service and office facilities close to the centre of Łódź. The project consists of four residential buildings, including over 600 premises.





## DZIELNA 62 OCHNIK DEVELOPMENT

---

“Dzielna 62” apartment block in Warsaw is an elegant building with an attic, holding air-conditioned apartments with areas ranging from 40 m<sup>2</sup> to 120 m<sup>2</sup>.





## GOLDEN TOWER

---

Golden Tower is an exclusive apartment building with premium flats for sale. The investment site is situated in the very heart of Łódź. The building is 72 m high and has been designed using state-of-the-art technologies. Most of the Golden Tower's floors shall hold luxurious, air-conditioned apartments featured with the Smart Home system.





## OSIEDLE LATARNIKÓW DEVELIA

---

Osiedle Latarników is a modern project on ul. Letnicka in Gdynia. It is situated within the coastline belt, 900 m from the sea (straight line distance).







## OSIEDLE NEONOWE PEKABEX

The housing estate is situated in the Old Town, in the very heart of Częstochowa. The investment project has been developed using a modern Pekabex System modular technology.



# Commercial premises

Office buildings, hotels and shopping malls are typically unique, non-standard and demanding projects. We have cooperated in implementing many such building structures, from the shell and core to the fit-out stage. Owing to our knowledge and involvement, we can avoid many problems throughout the investment process, which contributes to an easier preparation of the buildings for use.





## COMMERCIAL PREMISES

---



INVESTMENT PROJECT VALUE

> 4 billion PLN



USABLE AREA

> 1,3 million m<sup>2</sup>



SATISFIED INVESTORS

DOZENS



## MAGAZYN BAWELNY

Magazyn Bawełny is situated in the Manufaktura site in Łódź. It covers the “A+” rate office space with an 8,500 m<sup>2</sup> area, combined with carefully selected service facilities covering an area of 3,500



## WIDOK TOWERS

---

The building shall mainly be used for offices, but also offers hotel, commercial and service premises. It consists of twenty-eight ground storeys and three underground ones. It is 95 m high.



## FUZJA ECHO INVESTMENT

Fuzja covers an area of eight hectares and consists of twenty buildings with various functions. It was developed in the area of Karol Sheibler's old factory. A historical cogeneration plant originally developed in the Art Nouveau style is the venue's heart.

The historical buildings shall hold service premises, shops and restaurants, as well as offices covering a total ca. 40,000 m<sup>2</sup>





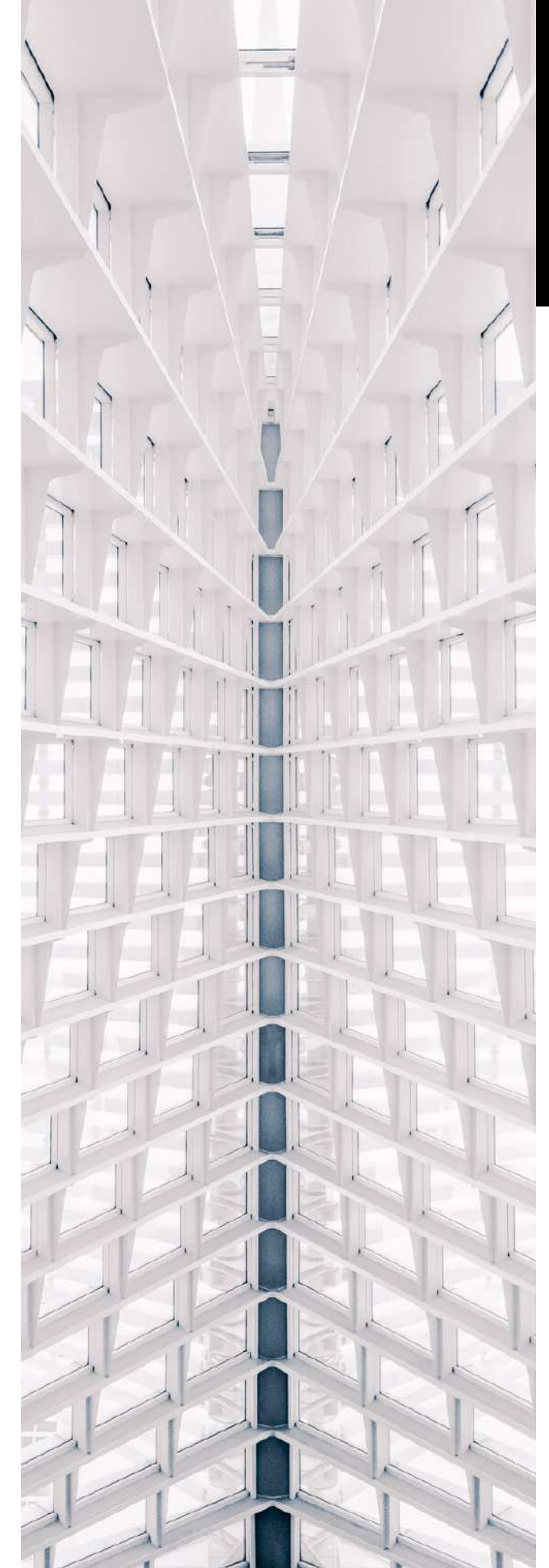
## FORT MOKOTÓW WHITE STONE DEVELOPMENT

---

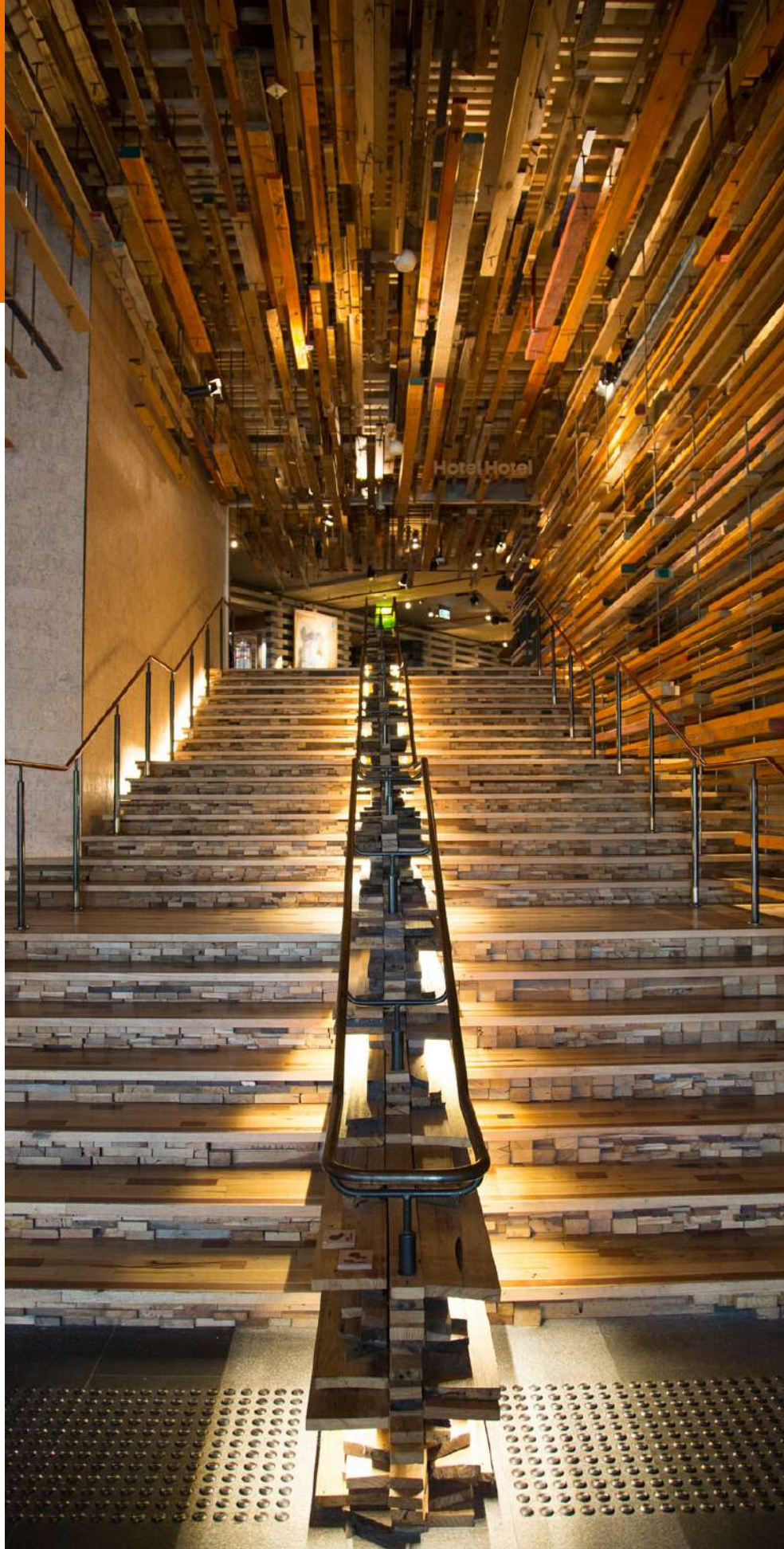
Fort Mokotów is a four-hectare area of the former barracks and powder storage adapted into offices, art studios, photography studios, advertising agencies and catering facilities.



# THEY TRUSTED US:







# Follow us

---



## LinkedIn

<https://www.linkedin.com/company/2m-project-management/?viewAsMember=true>



## YouTube

<https://www.youtube.com/channel/UCI0n93rk20uBbf2iwmRhYbg>

# Work with us

---



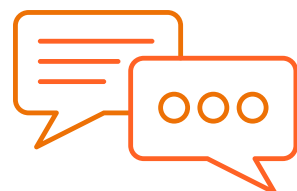
## Website

<https://2mpm.pl>



## E-mail

biuro@2mpm.pl



## Telephone

730 - 767 - 375





2M PM SP. O.O.  
UL.TARGOWA 9A  
90-042 ŁÓDŹ

---

